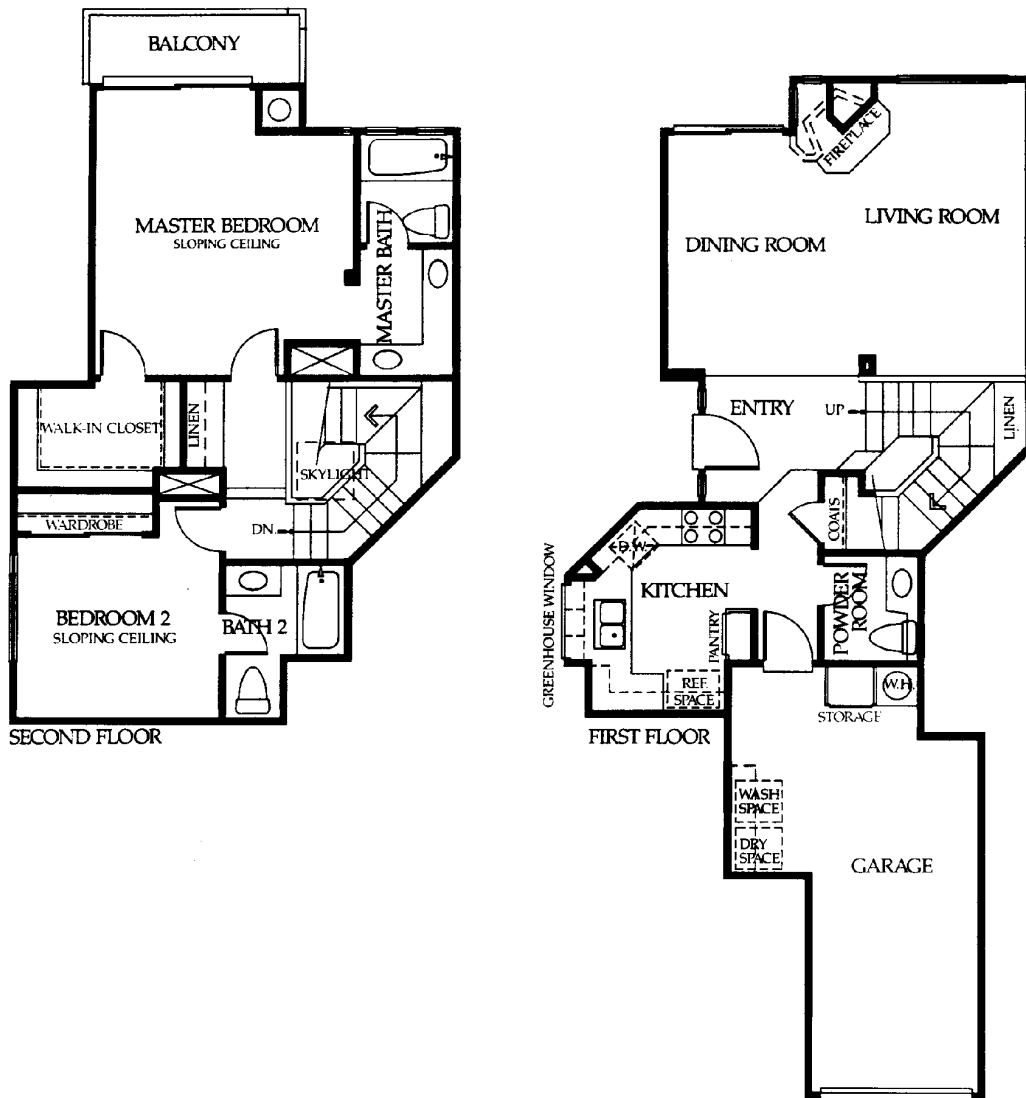


PLAN FOUR

2 Bedrooms, 2½ Baths, Living Room, Dining Room,
Kitchen, Balcony, Attached Garage, 1,220 Sq. Ft.



Because of our policy of constant improvement we reserve the right to make changes in material, equipment, or architecture.
Features may vary from models depicted herein. Your sales representative has complete, current information.